

INTERNATIONAL TEAM

ASTE TELESCOPICHE

TELESCOPIC POLES



ISTRUZIONI DI MONTAGGIO

Congratulazioni per aver acquistato un Calciobalilla
Per il montaggio del calciobalilla serviranno:



- Cacciavite a croce
- Chiavi a stella n° 10 - 13 - 17
- Martello

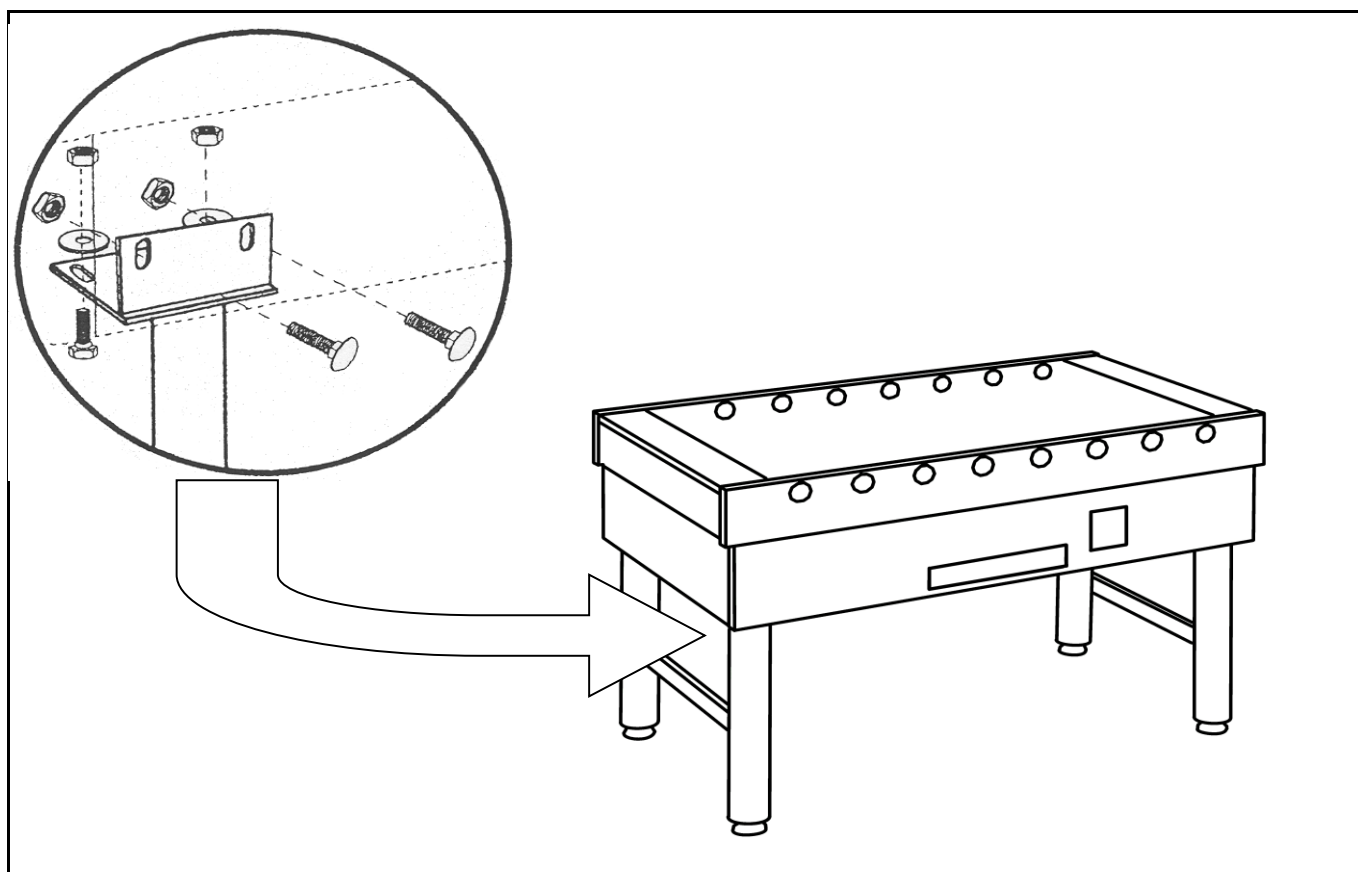
ASSEMBLY INSTRUCTION

Congratulations on acquiring a **FAS** Table Football Game.
You will need:

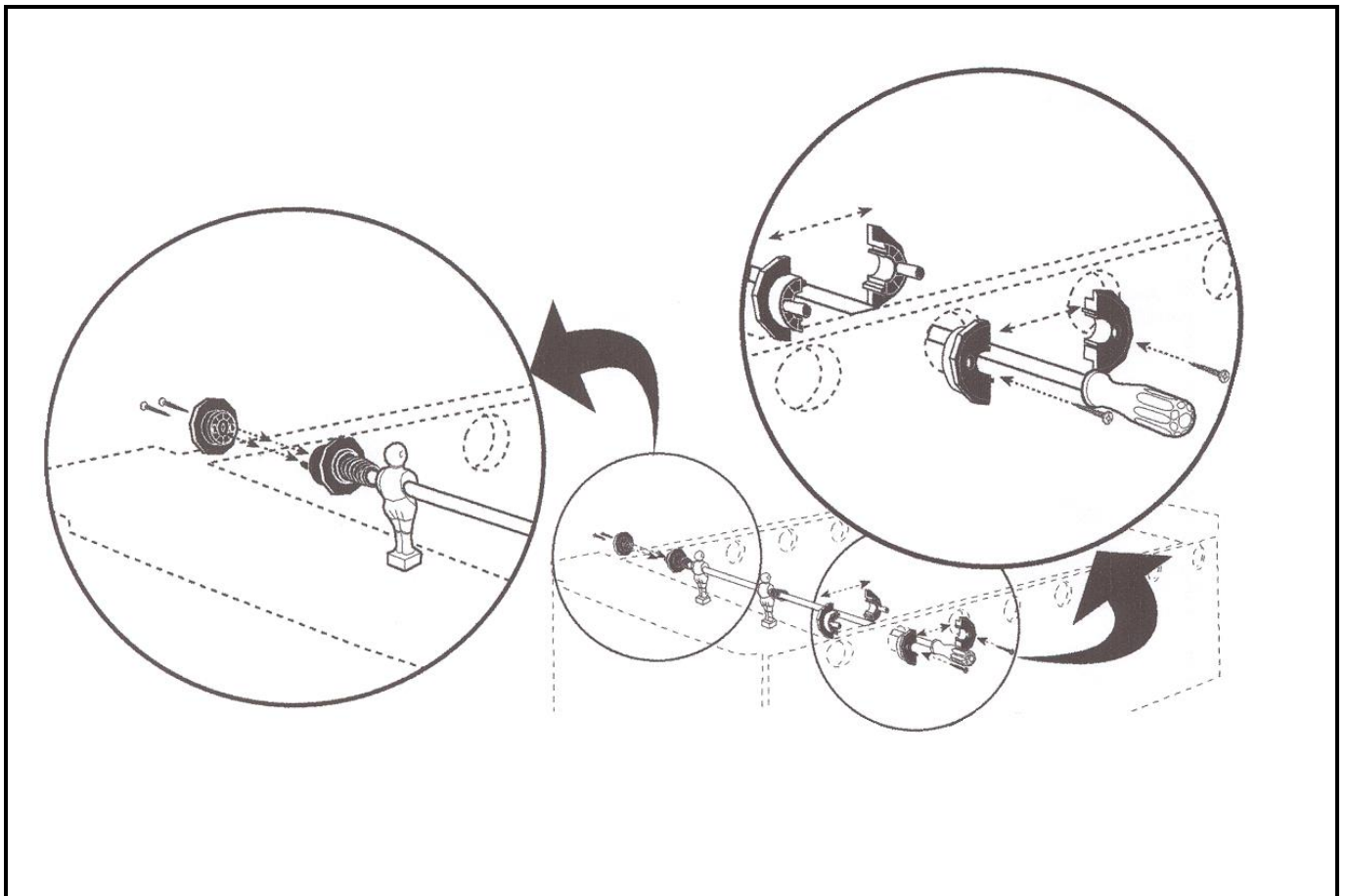
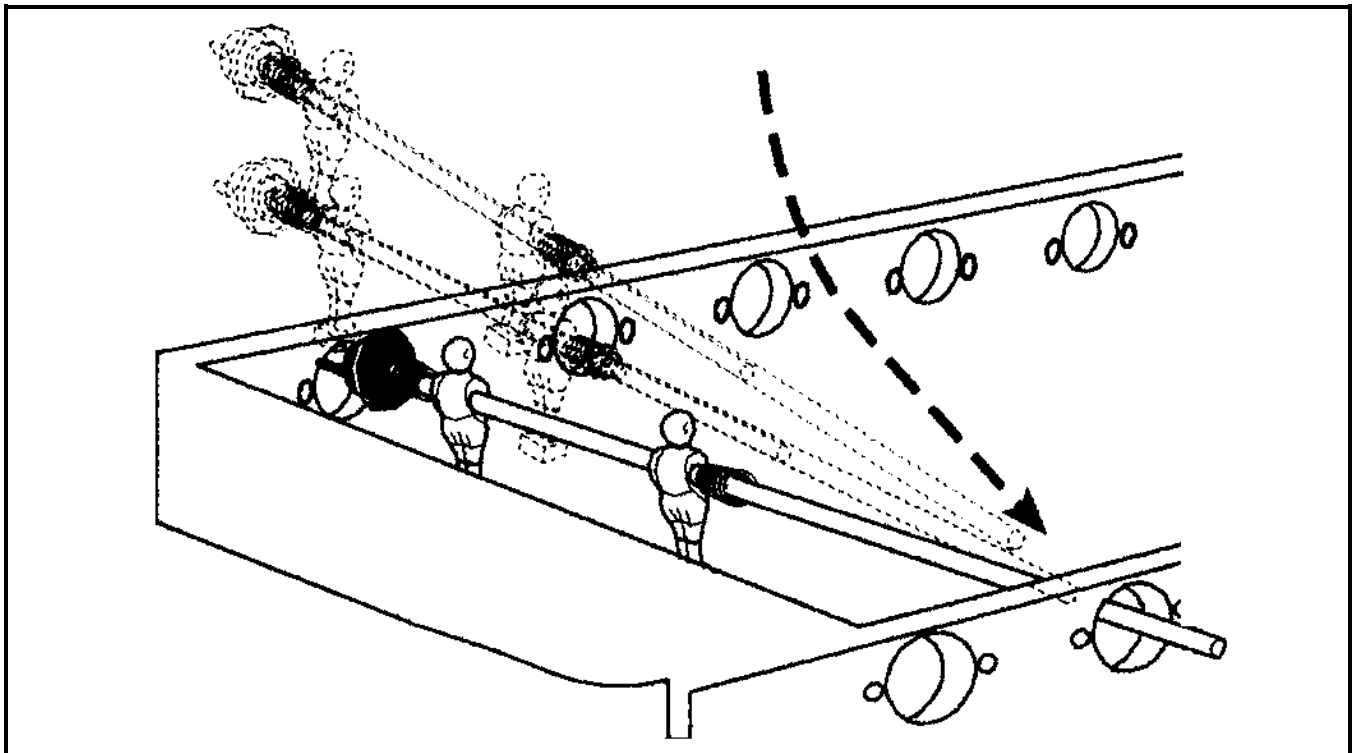


- Screwdriver
- Spanner n° 10 - 13 - 17
- Hammer

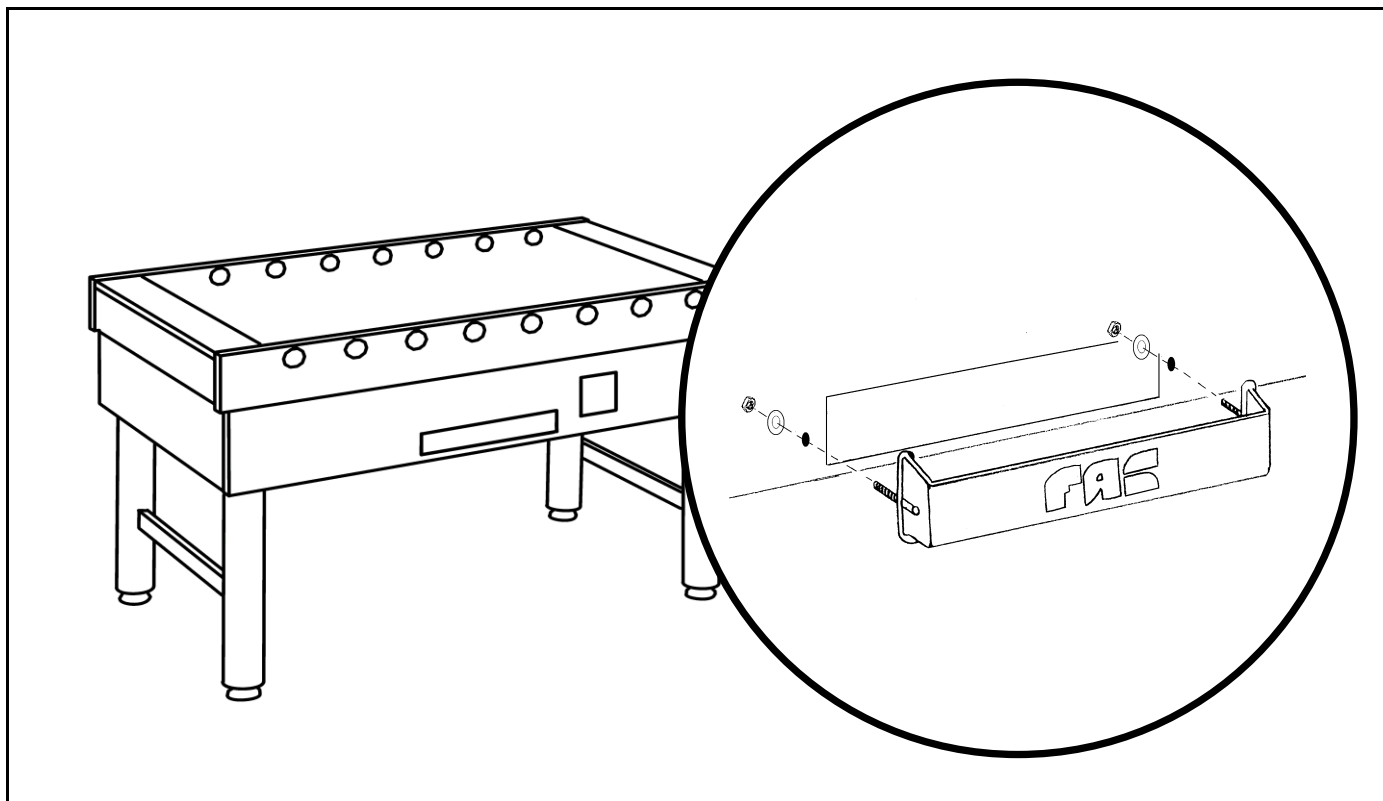
Fissaggio delle Gambe – Attaching the Legs



Fissaggio delle Aste – Fitting The Poles



Fissaggio del Frontalino – Fitting the Ball Collector



Fissaggio della Gettoniera – Fitting the Coin Mechanism

